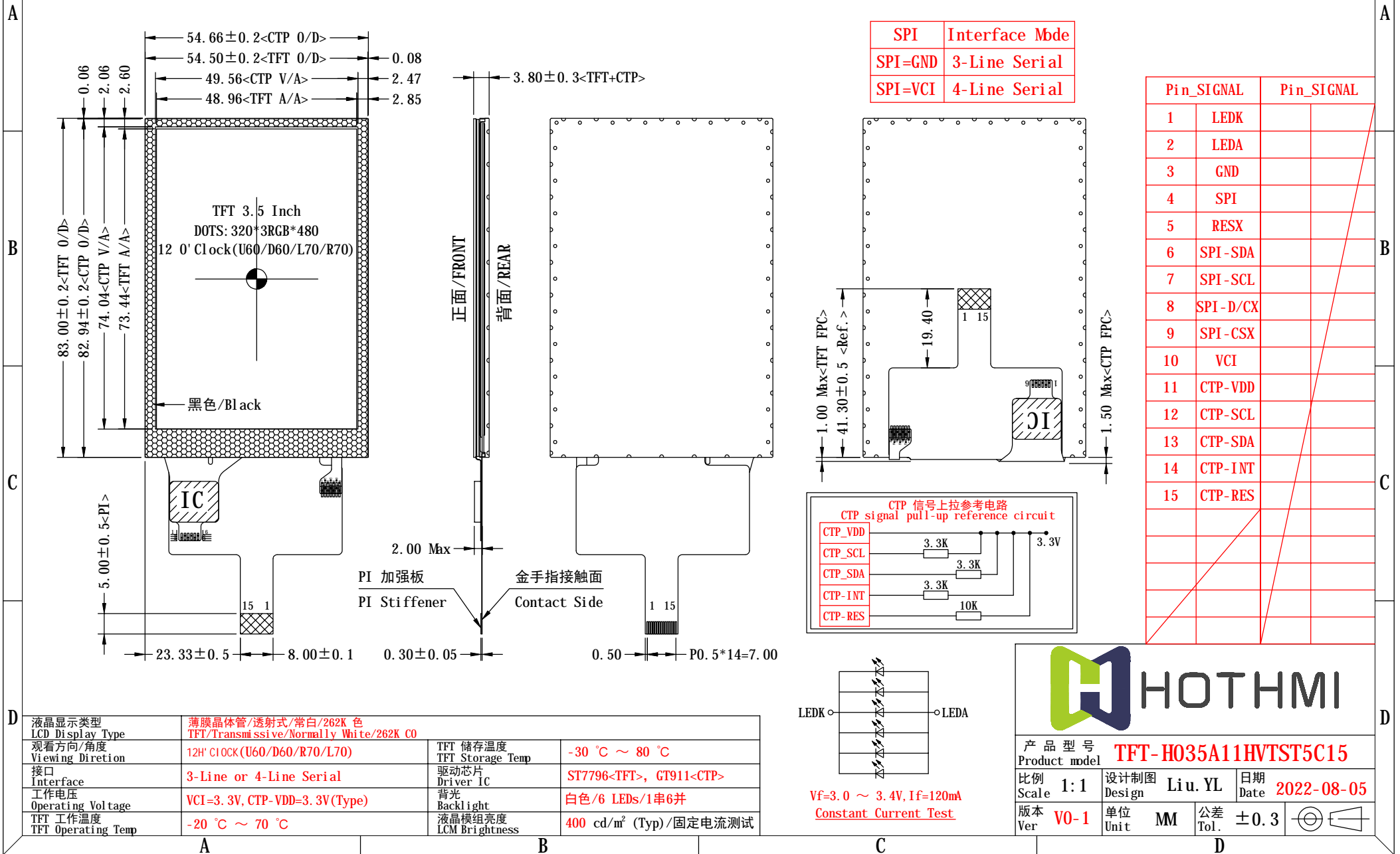
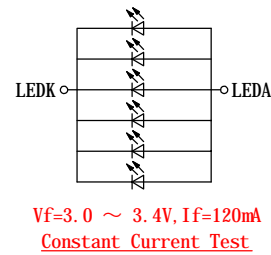
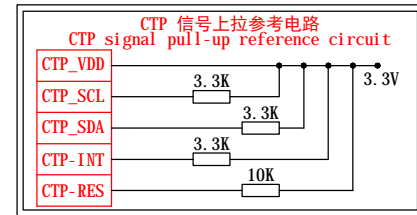
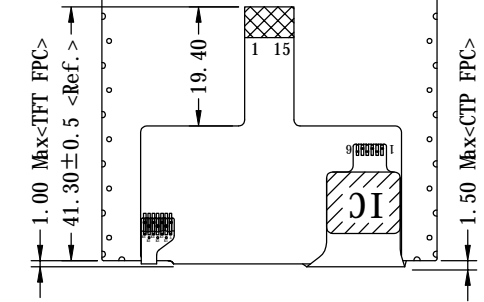


***为防止LCD产生图像残留，在使用常黑面板时不要长时间显示固定图案。如果LCD需要显示固定图案，建议时间少于 2 分钟或者更短的时间内刷新显示内容一次或多次。
 ***In order to prevent the LCD from producing image retention, do not display a fixed pattern for a long time when using a normally black panel. If the LCD needs to display a fixed pattern, it is recommended to refresh the display one or more times in less than 2 minutes or less.
 强烈建议使用黑色图像或移动图像作为屏幕保护程序。It is strongly recommended to use a black image or moving image as a screen saver.



SPI	Interface Mode
SPI=GND	3-Line Serial
SPI=VCI	4-Line Serial

Pin	SIGNAL	Pin	SIGNAL
1	LEDK		
2	LEDA		
3	GND		
4	SPI		
5	RESX		
6	SPI-SDA		
7	SPI-SCL		
8	SPI-D/CX		
9	SPI-CSX		
10	VCI		
11	CTP-VDD		
12	CTP-SCL		
13	CTP-SDA		
14	CTP-INT		
15	CTP-RES		



产品型号 Product model		TFT-H035A11HVTST5C15	
比例 Scale	1:1	设计制图 Design	Liu.YL
版本 Ver	V0-1	日期 Date	2022-08-05
单位 Unit	MM	公差 Tol.	± 0.3

液晶显示类型 LCD Display Type	薄膜晶体管/透射式/常白/262K 色 TFT/Transmissive/Normally White/262K C0	TFT 储存温度 TFT Storage Temp	-30 °C ~ 80 °C
观看方向/角度 Viewing Direction	12H' CLOCK (U60/D60/R70/L70)	驱动芯片 Driver IC	ST7796-TFT>, GT911-CTP>
接口 Interface	3-Line or 4-Line Serial	背光 Backlight	白色/6 LEDs/1串6并
工作电压 Operating Voltage	VCI=3.3V, CTP-VDD=3.3V (Type)	液晶模组亮度 LCM Brightness	400 cd/m ² (Typ)/固定电流测试
TFT 工作温度 TFT Operating Temp	-20 °C ~ 70 °C		